

Technical Data Sheet



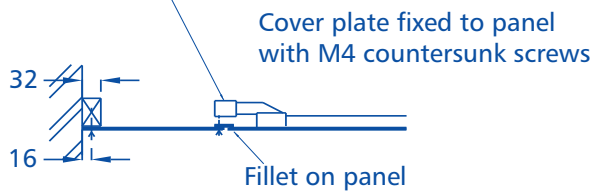
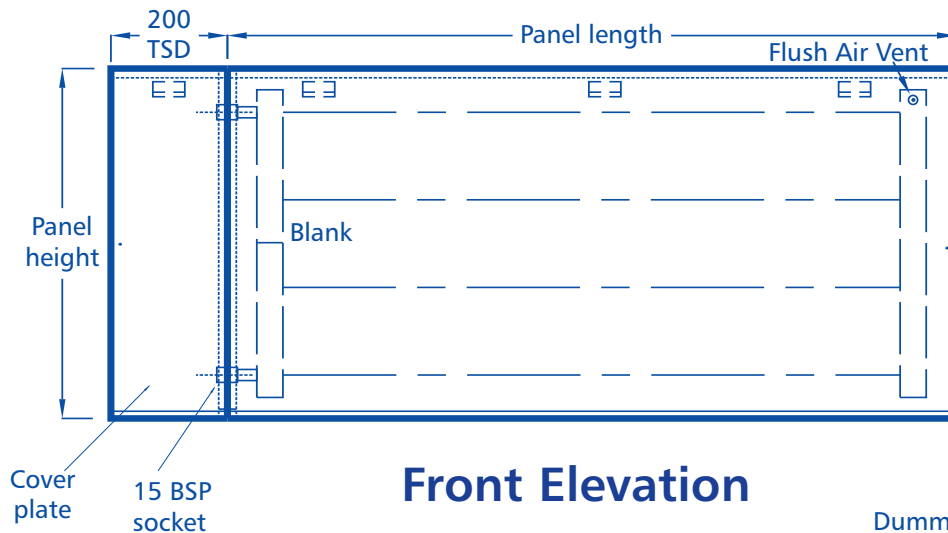
Radiant Heating & Cooling Panels

Solray Wall Panel 2RAW1C:S

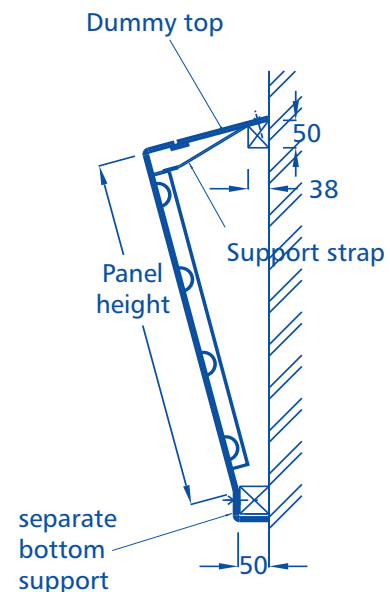
2 Returned Edges, 1 Cover Plate

Wall Angled Panel, Steel Faceplate

Data Sheet 6-7



Cover Plate Detail



Section

NOTES

- All panels are constructed from 2mm mild steel.
- Panels finished in a primer for final painting on site by others with the first coat being applied prior to installation, or in a factory applied textured powdercoat to any standard colour.
- Timber grounds by others. Panels insulated with 50mm glass fibre class 'o' backed mattress.
- Panels to be complete with angle cleats along top edge at approximately 600mm centres for fixing with straps.
- Panels drilled at approximately 600mm centres along bottom edge for fixing with No.7 countersunk wood screws.
- Connections are 15mm, 20mm or 25mm BSP sockets.
- Cover plate manufactured to site dimensions (TSD) after panel is fixed.
- Panels tested to 700 kPa at works.
- Panel mass is approximately 40kg/m².