

# Technical Data Sheet



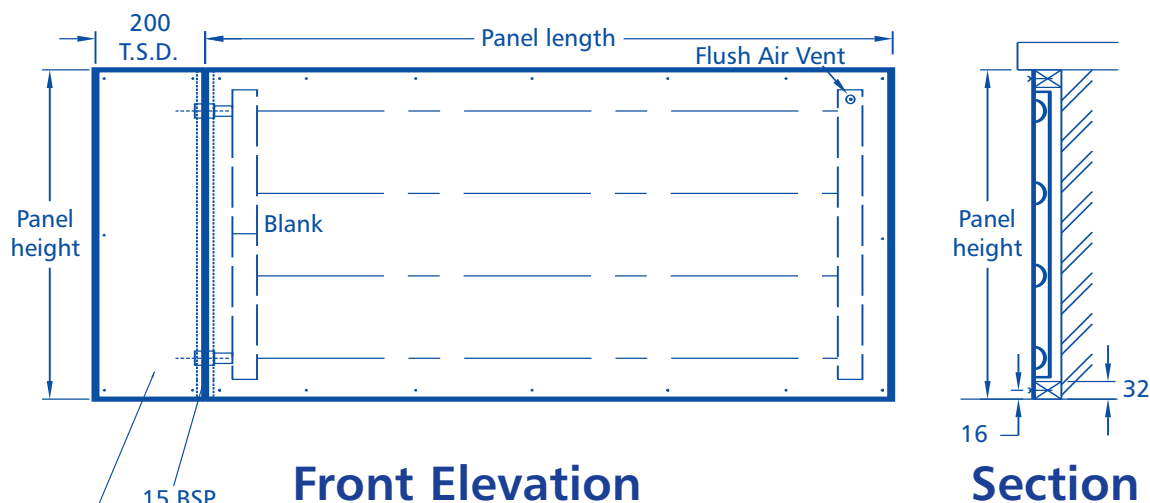
Radiant Heating & Cooling Panels

## Solray Wall Panel 4GW1C:S

4 Guillotined Edges, 1 Cover Plate

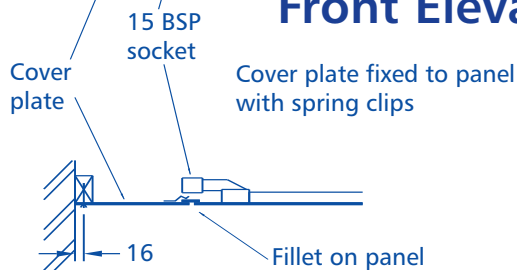
Wall Mounted, Steel Faceplate

Data Sheet 6-1



Front Elevation

Section



Cover Plate Detail

### NOTES

- All panels are constructed from 2mm mild steel.
- Panels finished in a primer for final painting on site by others with the first coat being applied prior to installation, or in a factory applied textured powdercoat to any standard colour.
- Timber grounds by others.
- Panels insulated with 50mm glass fibre class 'o' backed mattress.
- Panels drilled at approximately 300mm centres for fixing with No.7 countersunk wood screws.
- Connections are 15mm, 20mm or 25mm BSP sockets.
- All edges guillotined.
- Cover plate manufactured to site dimensions (TSD) after panels are fixed.
- Panels tested to 700 kPa at works.
- Panel mass is approximately 40 kg/m<sup>2</sup>.

COMYN CHING & CO. (SOLRAY) LTD

SOLRAY WORKS, MANILLA STREET, DOCKLANDS, LONDON E14 8LG

TEL: 020 7987 8787 FAX: 020 7987 9898

WWW.SOLRAY.CO.UK E-MAIL: SALES@SOLRAY.CO.UK