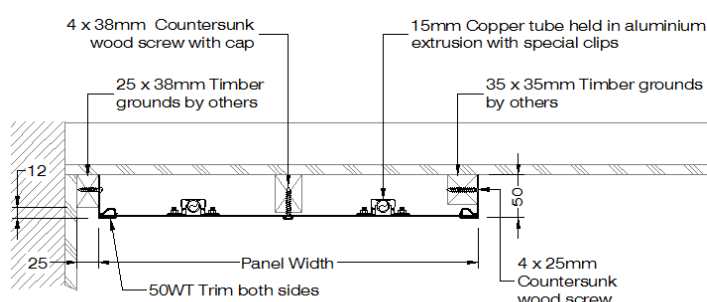
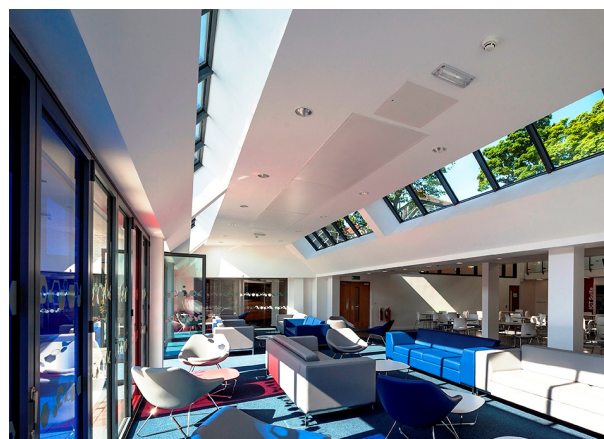


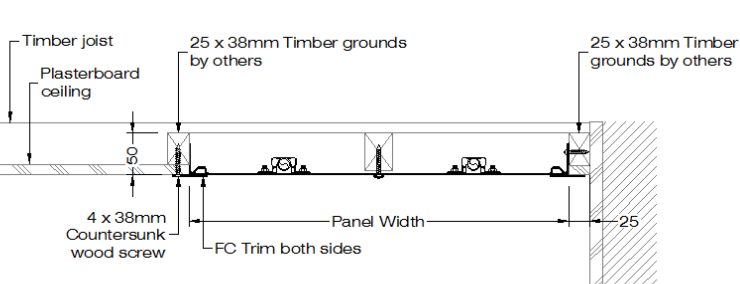
Solray ND Panels

Application: Solid soffit or plasterboard ceilings and walls

Solray ND panels are designed to enable even the most complicated room to be sized simply and effectively to match the heat loss. ND panels can either be installed around the perimeter of the room or as strips in the centre of the ceiling. Services can also be integrated into the panels where required.



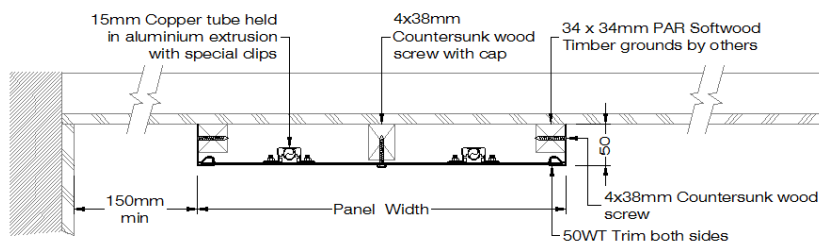
Surface Mounted ND Perimeter
Section Detail



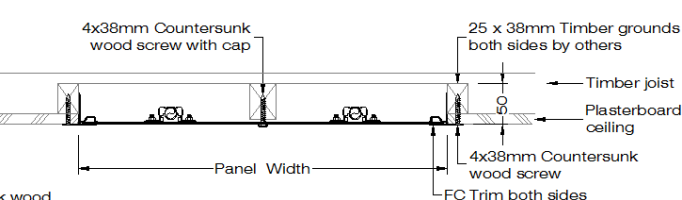
Flush Mounted ND Perimeter
Section Detail

When installed around the perimeter, the panels provide balanced heat distribution around the areas that experience most of the heat loss. Furthermore, the middle of the ceiling is left clear for other services such as lighting. Often each room will only need one connection, which allows a cost saving on pipework during installation.

When installed in strips in the centre of the ceiling, the ND panels are highly effective and aesthetically discrete as well as being able to support integrated services where required.



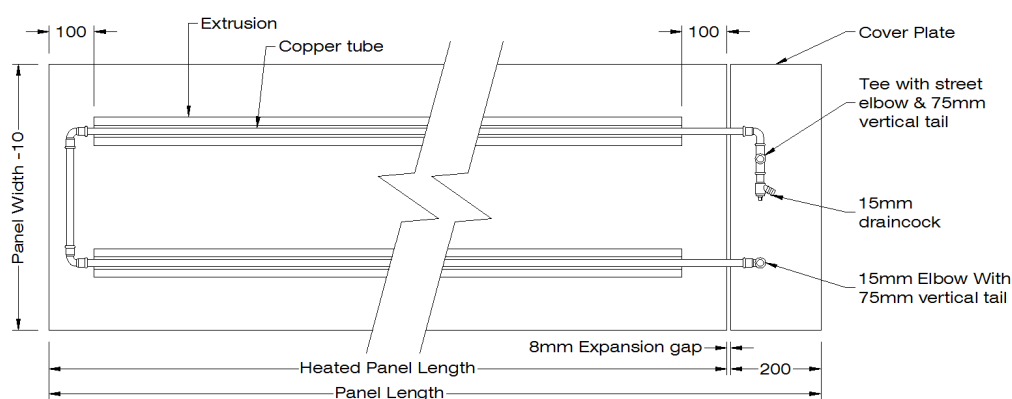
Surface Mounted ND Section Detail



Flush Mounted ND Section Detail

ND Panels are made up of separate 3000mm (or smaller) plates which are joined together almost invisibly without the need for flexibles or air vents for high points. Available in any width up to 1200mm, ND panels are completely bespoke to your room and can even cope with pillars and other obstructions.

ND Panels are installed by Solray trained installers and can be supplied with or without cold cover plates to allow access to the panel connections.



ND Standard Connection Detail

Solray ND Technical Specification

- 1.6mm smooth aluminium faceplates, free of any ridges and lines
- Factory finished in a white texture to RAL 9010 (other colours can be provided)
- Waterways are copper tubes sized to minimise pressure drops while maintaining turbulent flow through all tubes. The minimum pipe diameter is 15mm to prevent the tubes blocking
- All factory assembled grids are tested to 7 bar, for system working pressures of 3.5 bar. Solray panels can be tested to higher pressures if required
- A drain cock is included as standard at all low points
- Insulated with 50mm foil backed unencapsulated glass fibre with a thermal conductivity at 70°C of 0.045 W/m K
- Panel mass:
 - 1 tube / 150-300mm wide panels 4.2kg/m max
 - 2 tube / 350-600mm wide panels 7.5kg/m max
 - 3 tube / 650-900mm wide panels 10.8kg/m max
 - 4 tube / 950-1200mm wide panels 14.2kg/m max
- The outputs of Solray Panels have been tested to BS EN 14037.